

CHANNELS SYSTEM WITH GRATING COVERS WIDTH 150 mm.

PC.023

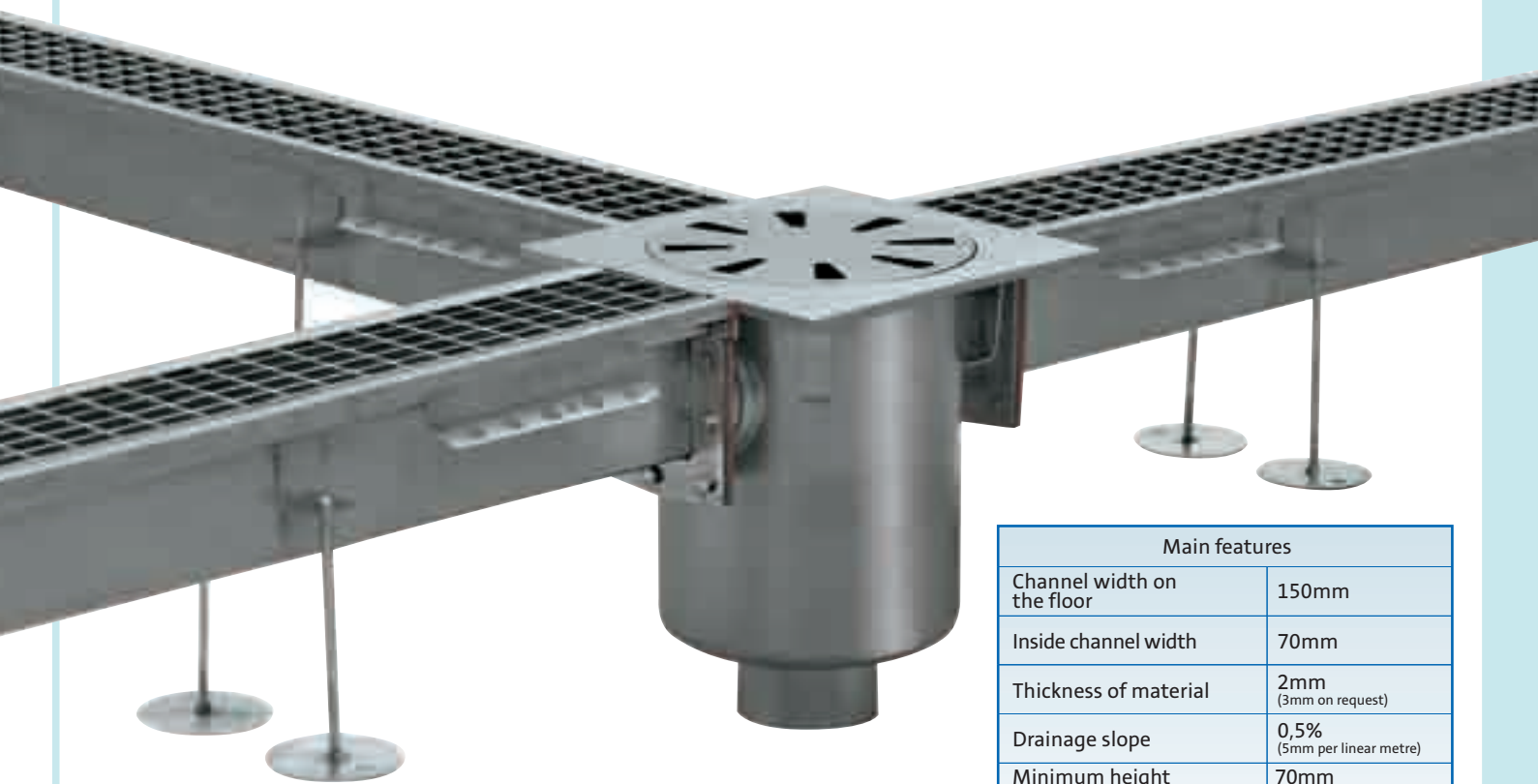
They represent an excellent solution where a channel with a high drainage capacity is called for together with the functionality of a grating cover enabling them to be inspected throughout.

Combined with 300 x 300 mm collection gullies, the same as the PC.001 slot channel systems, they are easily washed and inspected and the aspects of hygiene and cleanliness are provided for in compliance with Community regulations. Protection from sewerage discharge is ensured by an anti-smell siphon and by a removable filter basket.

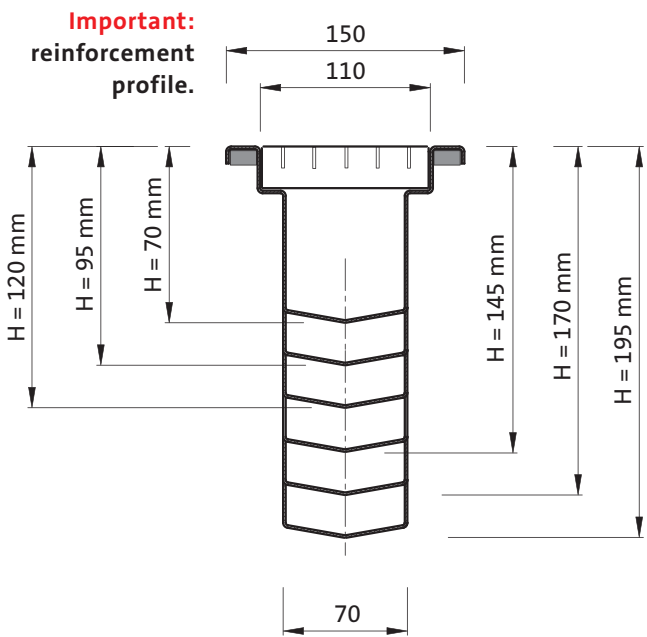
Constructed in AISI 304 stainless steel (or AISI 316 on request) parameters such as length, height, position of the discharges, can be varied depending on individual requirements.

For small supplies, to optimise the transport operations, the various pieces can be assembled into maximum lengths of 4.00 mt.

To facilitate the installation, a drawing will be attached to the material showing a system of numbering for installation of the pieces in the correct sequence.



Main features	
Channel width on the floor	150mm
Inside channel width	70mm
Thickness of material	2mm (3mm on request)
Drainage slope	0,5% (5mm per linear metre)
Minimum height Maximum height	70mm 195mm (30 metres)
Max. transport length	5.00 mt.
Cramps for anchoring	every 330mm
Flanges with screws	every 5.00 mt.



Section of the channel with a sequence of the variation of the slope up to 25.00 mt; the heights are with reference to module lengths of 5.00 MT. From MT. 1,00, MT. 1,50, MT. 2,00, MT. 2,50, MT. 3,00, MT. 3,50, MT. 4,00, MT. 4,50.

NOTE: Work is regularly carried out with totally personalised lengths taking no account of standard modules.

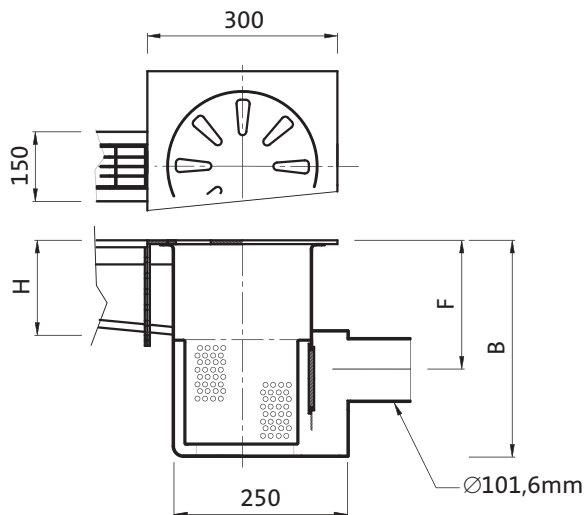
CHANNELS SYSTEM WITH GRATING COVERS WIDHT 150 mm. HORIZONTAL DISCHARGE



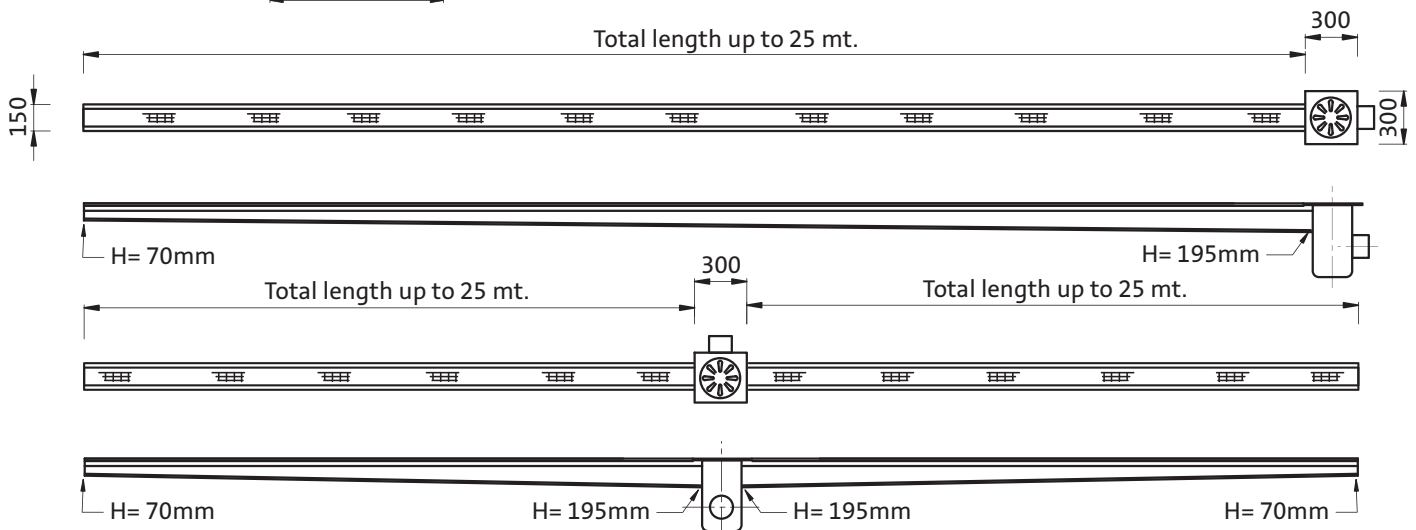
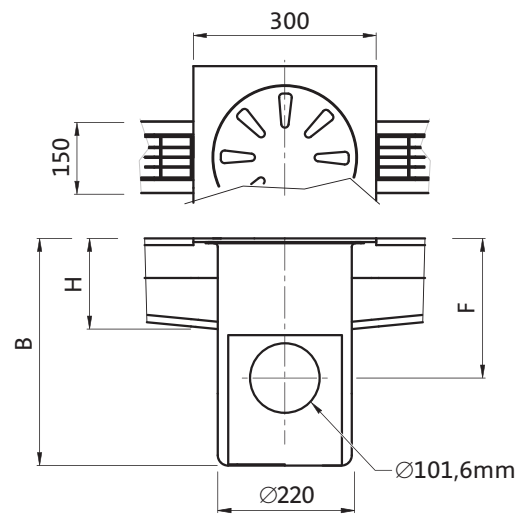
Note:

On request all systems can be fitted with adjustable feet for positioning and height levels.

PC.002GL GULLY WITH SINGLE CONNECTION FOR CHANNEL, HORIZONTAL DISCHARGE.



PC.003GL GULLY WITH DOUBLE CONNECTION FOR CHANNEL, HORIZONTAL DISCHARGE.



Note:

All systems are produced in accordance with the requirements of the customer, hence parameters such as length and position of the discharges are not binding.

Channel length	Channel height "H" on gully	Size "B"	Middle discharge depth "F"
Up to MT. 5,00	95mm	280mm	130mm
From MT. 5 to MT. 10	120mm	305mm	155mm
From MT. 10 to MT. 15	145mm	330mm	180mm
From MT. 15 to MT. 20	170mm	355mm	205mm
From MT. 20 to MT. 25	195mm	380mm	230mm